

# 101 N Benoist Farms Rd

West Palm Beach, FL 33411

±29,375 SF WAREHOUSE/OFFICE WITH OUTSIDE STORAGE FOR LEASE



## PROPERTY HIGHLIGHTS

- + ±29,375 SF Total Available in Two Buildings
  - Building 1 - ±14,892 SF Total Space (9,017 SF Warehouse, 5,875 SF Office)
  - Building 2 - ±14,483 SF Total Space (10,091 SF Warehouse, 4,392 SF Office)
- + ±9 Acres Total Area
- + Fenced, and Gated Buildings with Secure Yard
- + Loading Docks and Doors
  - Building 1 - Four Grade Level Loading Doors; Two (2), 12' x 12' and Two (2), 16' x 16'
  - Building 2 - Grade and Dock High Loading
- + 34' Ceilings with LED Lighting
- + Located One Block from Southern Boulevard with Easy access to the Florida Turnpike and I-95

## Contact Us

**KIRK NELSON**  
Executive Vice President  
+1 561 716 9936  
kirk.nelson@cbre.com

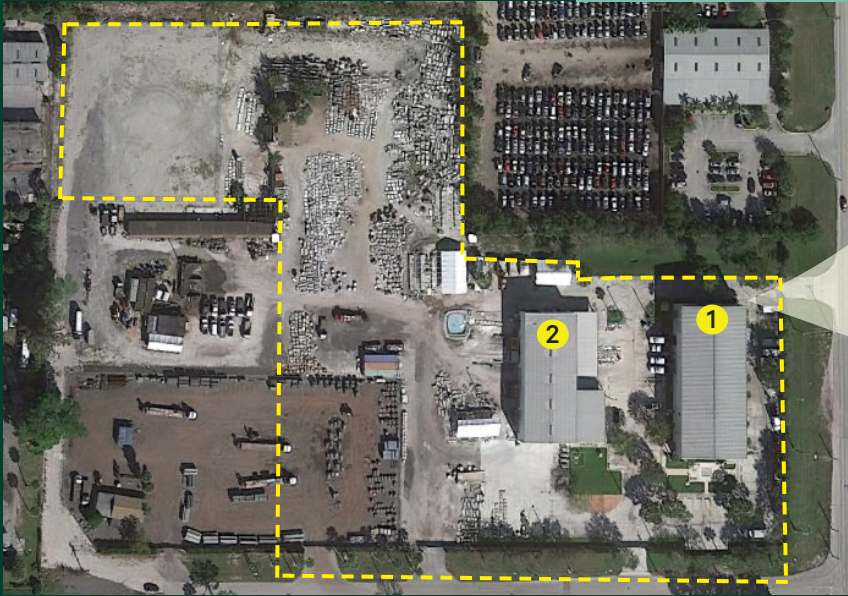
**ROBERT SMITH**  
Executive Vice President  
+1 561 707 5558  
robert.c.smith@cbre.com

**Lease Rate: Call for Details**

±29,375 SF OFFICE/WAREHOUSE WITH OUTSIDE STORAGE  
101 N Benoist Farms Road | West Palm Beach, FL

For Lease

Land Availability



|            | Availability |
|------------|--------------|
| Building 1 | 14,892 SF    |
| Building 2 | 14,483 SF    |

Additional Photos



Contact Us

**KIRK NELSON**  
Executive Vice President  
+1 561 716 9936  
kirk.nelson@cbre.com

**ROBERT SMITH**  
Executive Vice President  
+1 561 707 5558  
robert.c.smith@cbre.com

© 2024 CBRE, Inc. All rights reserved. This information has been obtained from sources believed reliable, but has not been verified for accuracy or completeness. You should conduct a careful, independent investigation of the property and verify all information. Any reliance on this information is solely at your own risk. CBRE and the CBRE logo are service marks of CBRE, Inc. All other marks displayed on this document are the property of their respective owners, and the use of such logos does not imply any affiliation with or endorsement of CBRE. Photos herein are the property of their respective owners. Use of these images without the express written consent of the owner is prohibited.