



WAREHOUSE / MAINTENANCE FACILITY / OUTDOOR STORAGE

I-20 WEST ATLANTA

12801 Veterans Memorial Hwy
DOUGLASVILLE, GEORGIA 30134

Available for Lease

STREAM

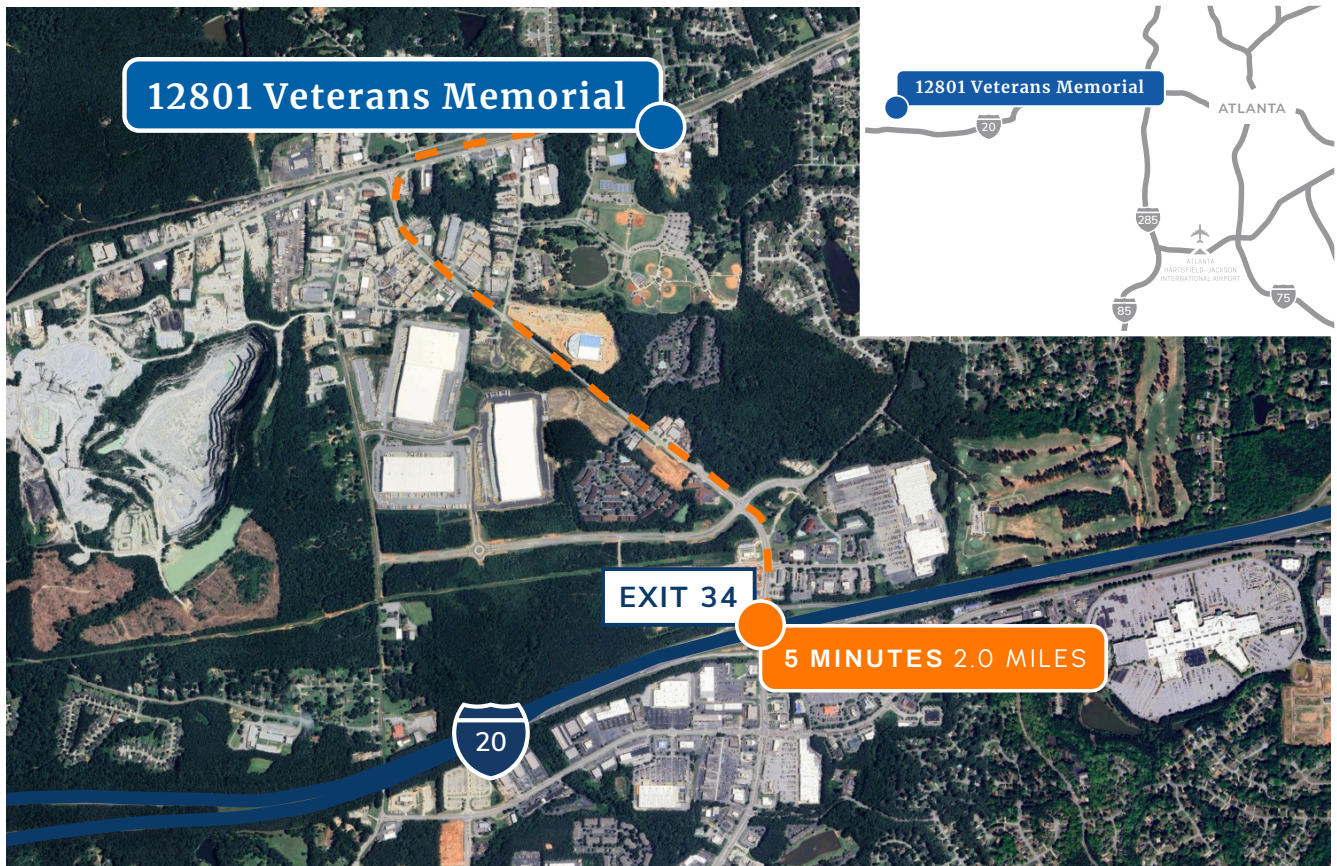




12801 Veterans Memorial

Property Features

WAREHOUSE	14,000 SF (~2,500 SF Office) 14' Clear Height 3 Drive-In Doors (12' x 14') 1 Dock High Door (8' x 10')	ACREAGE	6.00 Usable Acres 8.34 Gross Acres
MAINTENANCE FACILITY	6,000 SF 14' Clear Height 3 Drive-In Doors [2 (12' x 14'), 1 (10' x 10')]	TOTAL SF	23,000 SF
COVERED SHED	3,000 SF 12' Clear Height 1 Drive-In Door (10' x 12')	ACCESS	5 Minutes to I-20





Full Site Overview



Let's
Connect

BEAU ACUFF, SIOR
SENIOR VICE PRESIDENT

beau.acuff@streamrealty.com

T 404.962.8626

M 404.893.9833