

FOR LEASE

ALTERRA 512

*Multiple Sites Available for
Lease in Tacoma*

112TH ST E & GOLDEN GIVEN RD E
TACOMA, WA



KIDDER.COM

OWNED BY



EXCLUSIVELY LEASED BY





AVAILABLE
SITE
OPTIONS

	Address	Acres
SITE A	10811 Golden Given Rd E	4.00
SITE B	1321 109th St E	2.40
SITE C	1206 112th St E	9.64
SITE D	11511 Aqueduct Dr E	1.35

Potential Site Combinations	Acres
SITE A + B	6.40
SITE C + D	10.99



*Multiple Sites with Great Access to
I-5 & Port of Tacoma for Lease
in Tacoma, WA*

±17.39 total acres across 4 sites

7 total buildings/structures located on Site C
totaling 23,881 SF - main buildings provide 8,828 SF
(10 GL) & 7,706 SF (6 GL)

ECOR/Heavy Industrial Zoning → [ZONING TABLE](#)

Fenced, partially paved & lit

Uses include equipment rental, trailer storage,
trailer repair, and many more outside storage uses

Immediate access and visibility to 112th St & SR-512

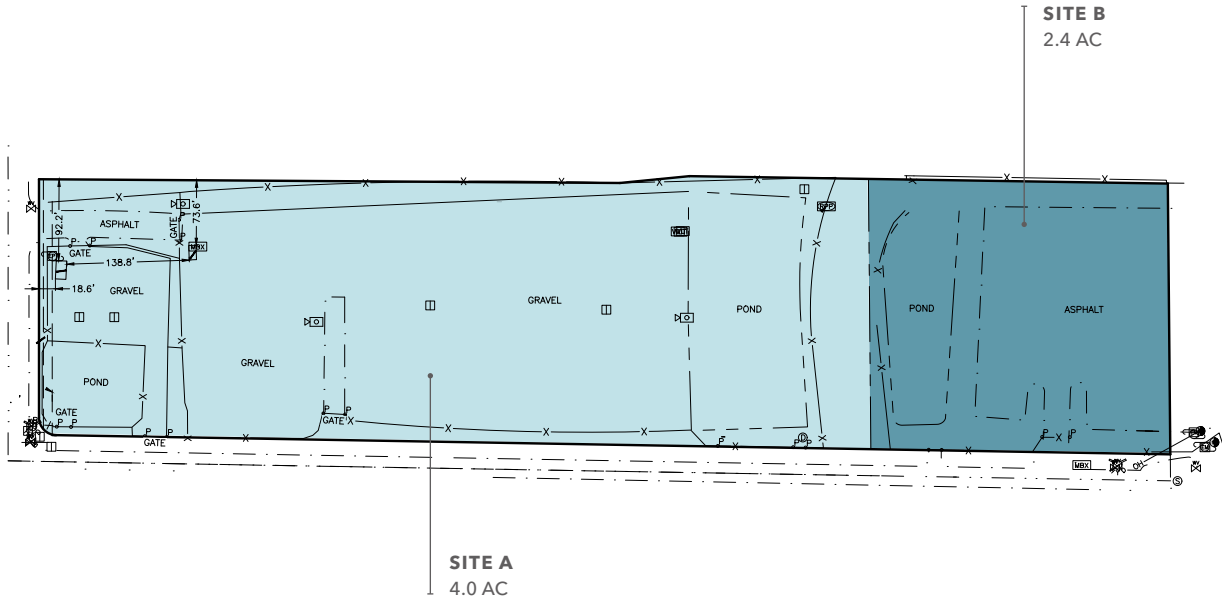
Excellent access to I-5 and Port of Tacoma via
multiple routes

CALL
FOR RATES

NOW
AVAILABLE



SITE PLAN: A & B



4 AC

LAND AREA (SITE A)

2.4 AC

LAND AREA (SITE B)

NOW

AVAILABLE

SITE PLAN: C & D



23,881 SF
BUILDING AREA (SITE C)

9.64 AC
LAND AREA (SITE C)

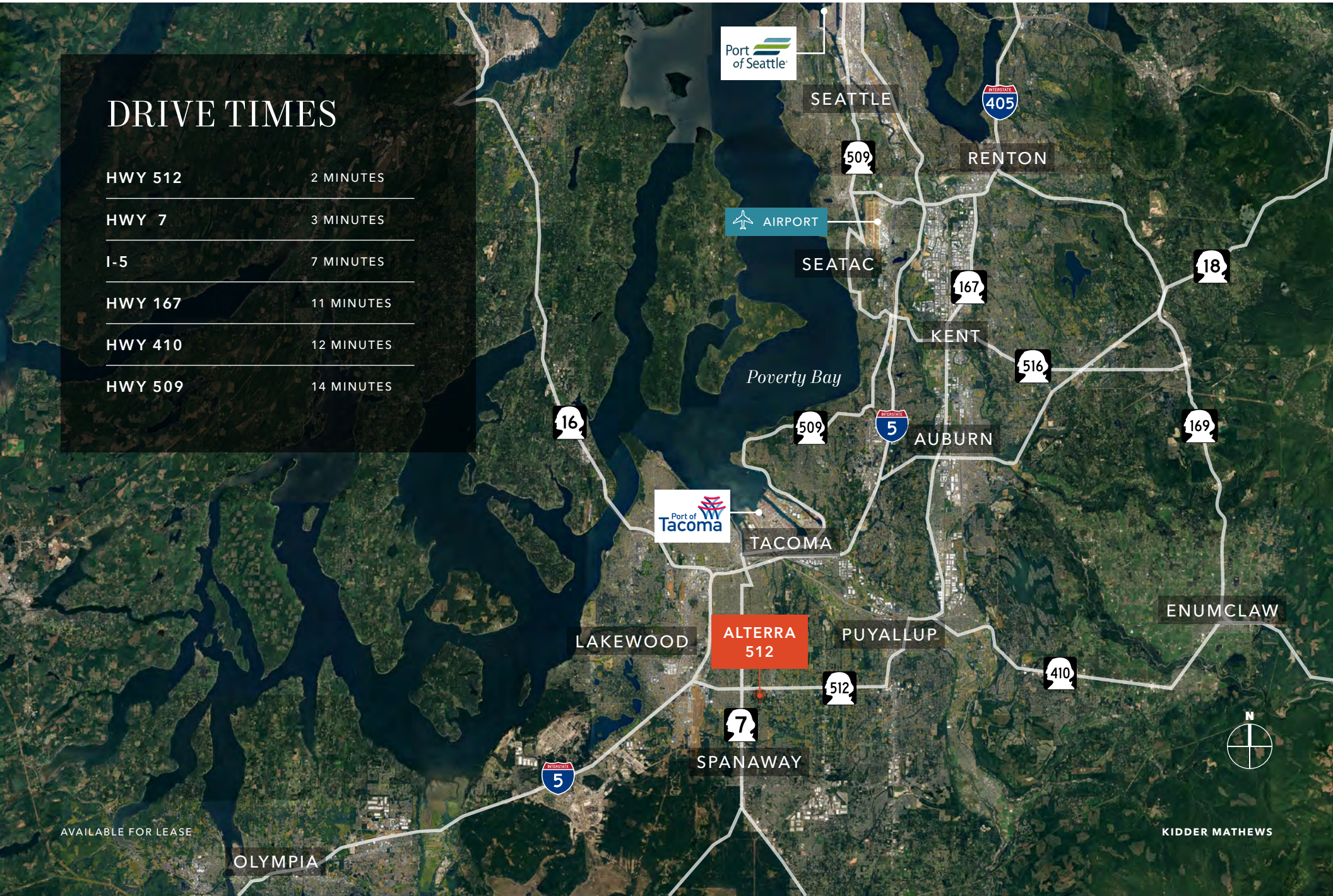
1.35 AC
LAND AREA (SITE D)

7 TOTAL BUILDINGS/STRUCTURES

- 23,881 SF total
- Multiple office structures with various total SF
- 18 grade-level doors
- 12.5' - 28' clear height

DRIVE TIMES

HWY 512	2 MINUTES
HWY 7	3 MINUTES
I-5	7 MINUTES
HWY 167	11 MINUTES
HWY 410	12 MINUTES
HWY 509	14 MINUTES



EXCLUSIVELY LEASED BY



OWNED BY



ALTERRA 512

*For more information,
please contact*

TRAVIS STANAWAY
Senior Vice President
206.248.6526
travis.stanaway@kidder.com

MATT MURRAY, SIOR
Executive Vice President
206.248.6541
matt.murray@kidder.com

DANE DAHLIN, SIOR
Senior Vice President
206.248.6519
dane.dahline@kidder.com

This information supplied herein is from sources we deem reliable. It is provided without any representation, warranty, or guarantee, expressed or implied as to its accuracy. Prospective Buyer or Tenant should conduct an independent investigation and verification of all matters deemed to be material, including, but not limited to, statements of income and expenses. Consult your attorney, accountant, or other professional advisor. All Kidder Mathews designs are the sole property of Kidder Mathews. Branded materials and layouts are not authorized for use by any other firm or person.

