



For Lease

3375 High Prairie Road | Grand Prairie, TX 75050

27,510 SF on 11.5 Paved Acres



Caleb McCoy, SIOR
Managing Director
caleb.mccoy@jll.com
(214) 949-2084

Bo Puckett
Senior Vice President
bo.puckett@jll.com
(214) 621-1565

3375 High Prairie Rd

Property Specifications

Building Size

- ◆ 19.3 Total Acres (11.5 Paved)
 - Ability to Expand
- ◆ Service: 12,070 SF
- ◆ Office: 9,250 SF
- ◆ Technical: 6,190 SF

Location

- ◆ Upper GSW Industrial Corridor
- ◆ Convenient Access to SH 161, I-30, 183 & 360
- ◆ Located 3 Miles South of DFW International Airport

Aerials

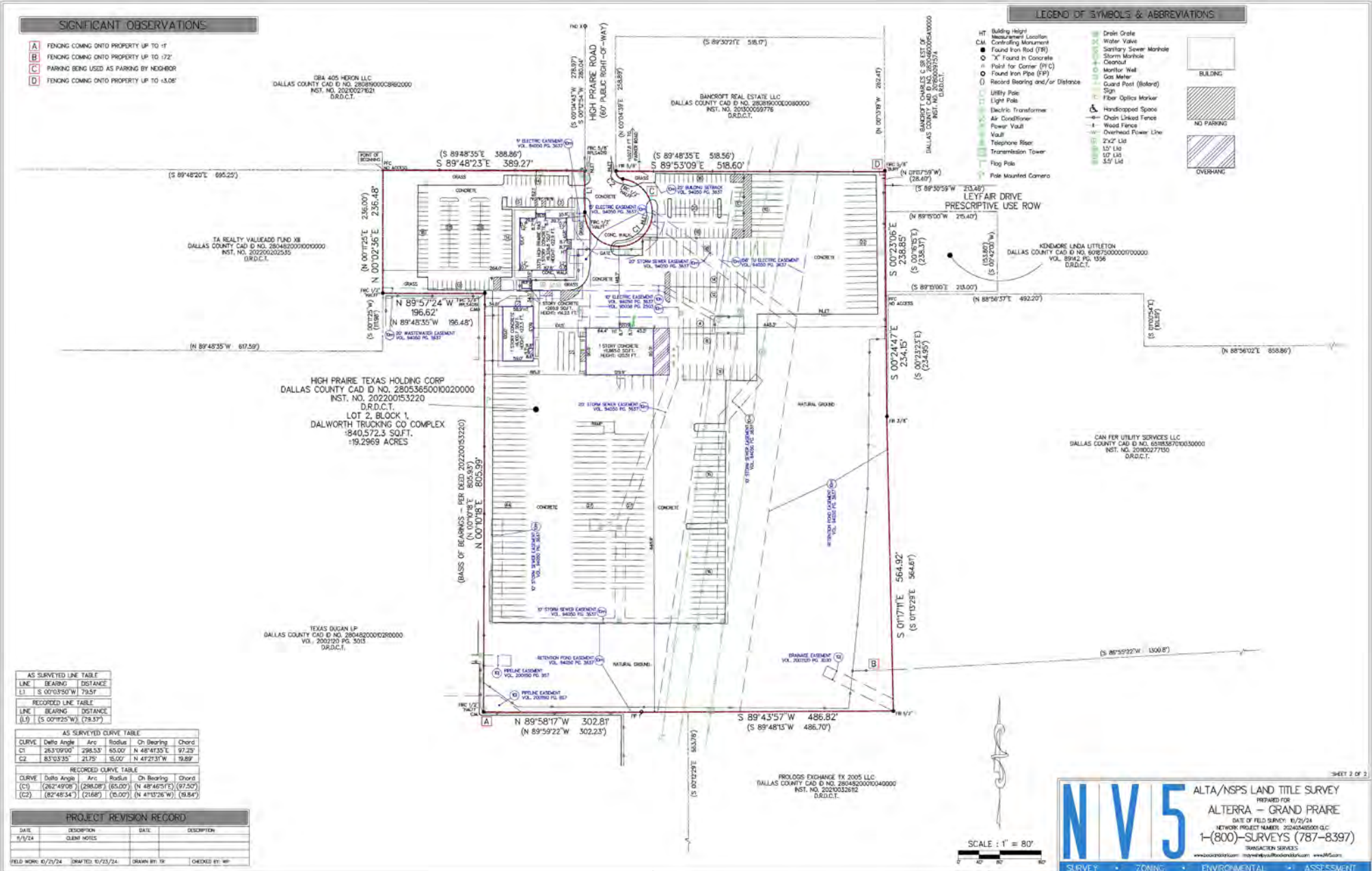


Site Features

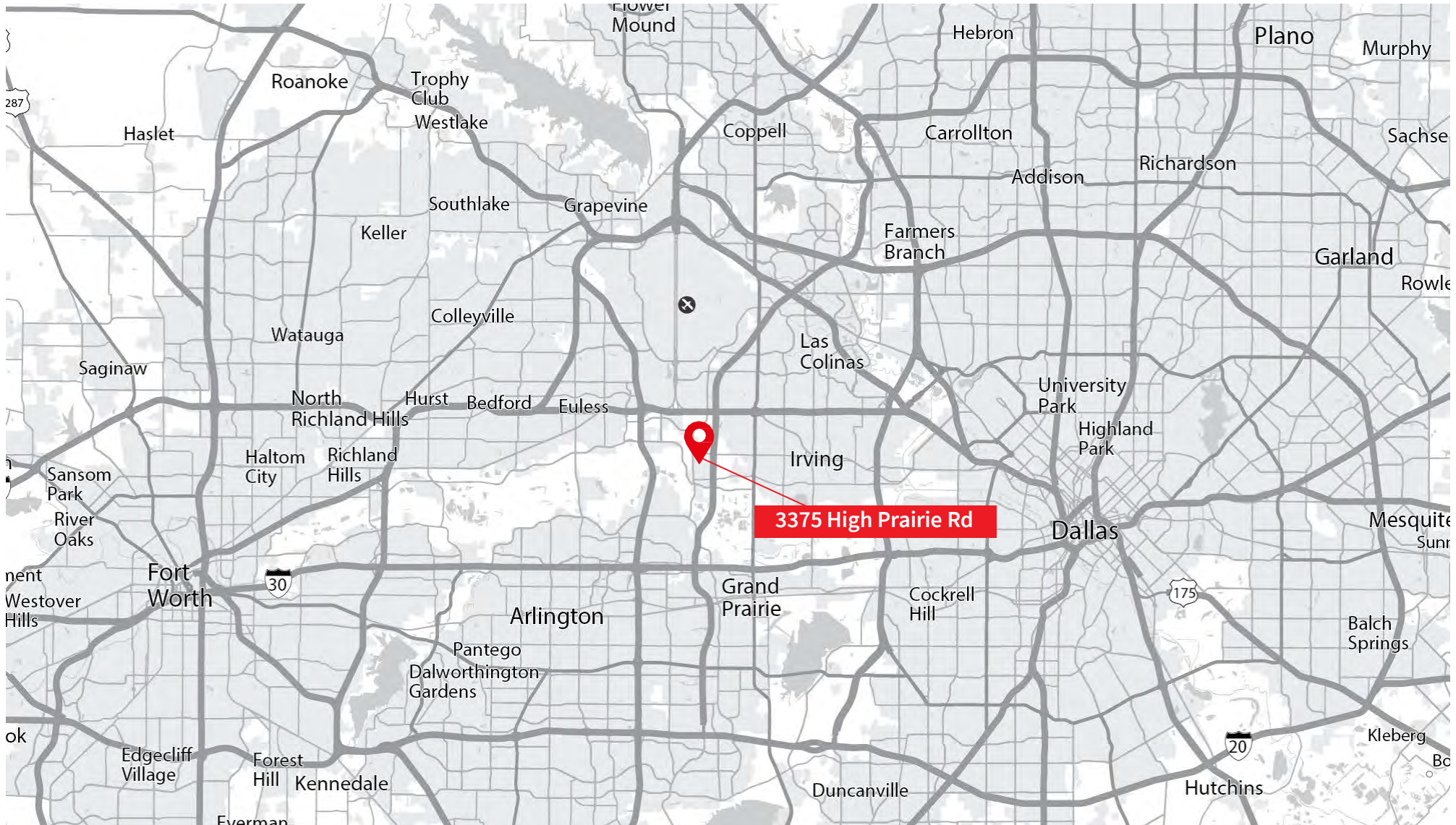
- ◆ Fully Paved
- ◆ Perimeter and Interior Security Lighting
- ◆ Fully Secured by 8' Chain Link Fence with Barbed Wire Arms
- ◆ (5) Drive Thru Bays
 - (10) 14'w x 16'h Grade Level Doors
- ◆ (1) Exterior Drive Thru Wash Bay
- ◆ (1) Detached Dock High Platform w/Ramp
- ◆ 3 Points of Access
- ◆ Automatic Keypad Entry
- ◆ LI Zoning

3375 High Prairie Rd

Survey



3375 High Prairie Rd



Although information has been obtained from sources deemed reliable, neither Owner nor JLL makes any guarantees, warranties or representations, express or implied, as to the completeness or accuracy as to the information contained herein. Any projections, opinions, assumptions or estimates used are for example only. There may be differences between projected and actual results, and those differences may be material. The Property may be withdrawn without notice. Neither Owner nor JLL accepts any liability for any loss or damage suffered by any party resulting from reliance on this information. If the recipient of this information has signed a confidentiality agreement regarding this matter, this information is subject to the terms of that agreement. © 2024 Jones Lang LaSalle IP, Inc. All rights reserved.



Caleb McCoy, SIOR
Managing Director
caleb.mccoy@jll.com
(214) 949-2084

Bo Puckett
Senior Vice President
bo.puckett@jll.com
(214) 621-1565