



LOBER
REAL ESTATE

FOR LEASE – 32,367 SF with 11.8 Acres IOS

7405 & 7411 28th St E, Sarasota, FL 34243

Premier Single or Multi-Tenant IOS Site in the Heart of the Sarasota-Bradenton MSA

Devin Beeler
Senior Associate
+1 727 709 2179
Devin@Loberrealestate.com

Jason McCormick
Senior Associate
+1 561 613 5293
Jason@Loberrealestate.com

Robbie Lober
Managing Member
+1 727 999 1806
Robbie@Loberrealestate.com

Property Overview

[Google Map Link](#)

Address: 7405 & 7411 28th St E, Sarasota, FL 34243

Building Size: #1-Office: 10,312 SF #3-Warehouse: 2,055 SF
#2-Warehouse: 12,000 SF #4-Flex: 8,000 SF

Availability: AVAILABLE NOW

Loading: Nine (9) – 10'x14' Grade-Level Doors

Clear Height: 18-20 ft

Year Built: #1-Office: 2008 #3-Warehouse: 2017
#2-Warehouse: 2007 #4-Warehouse: 2014

Land Size: 11.8 Acres

Power: 3 Phase - 400 amps, 480V

Zoning: "LM" – Light Manufacturing
See Permitted Uses

County: Manatee

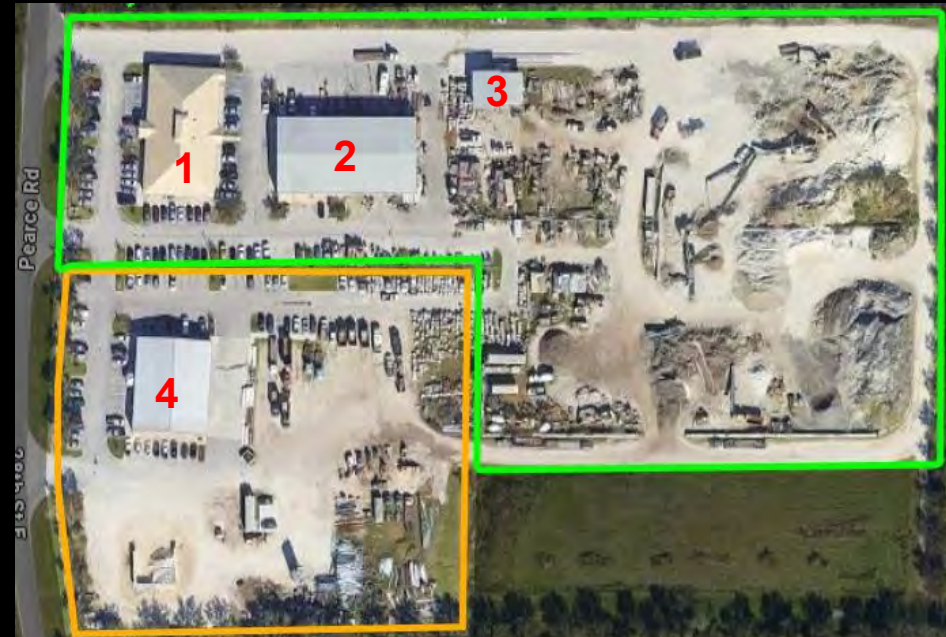
Access: Three points of ingress and egress.

24,367 SF on 6.2 Acres



8,000 SF on 5.5 Acres

24,367 SF on 8.0 Acres



8,000 SF on 3.7 Acres

Property Photos

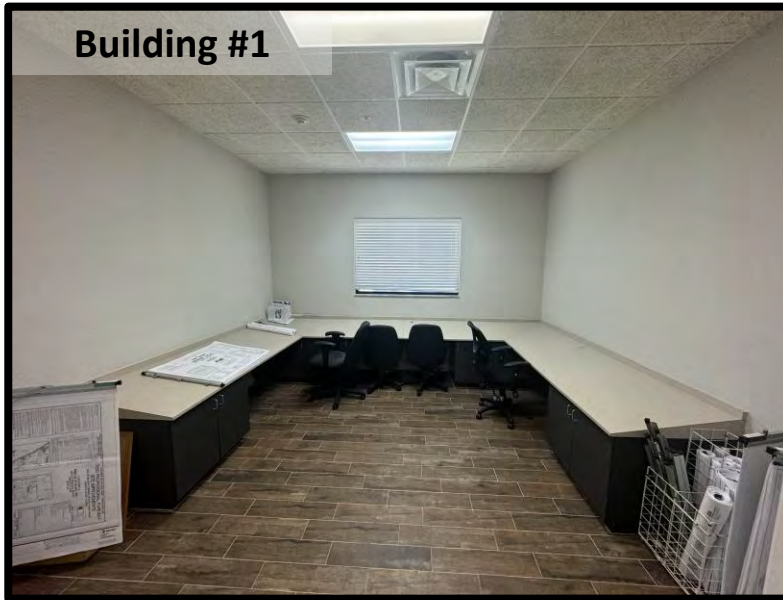


Property Photos

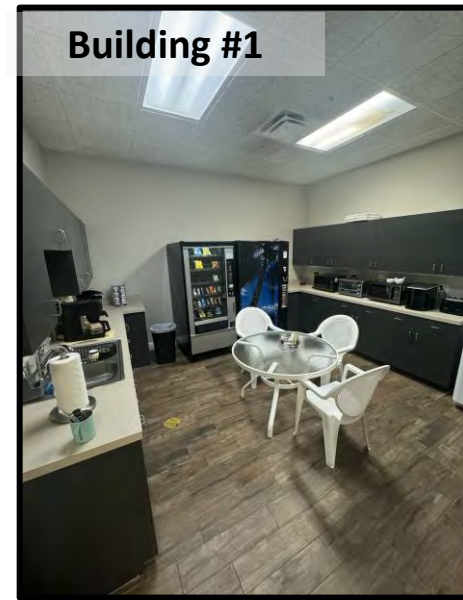
Building #1



Building #1



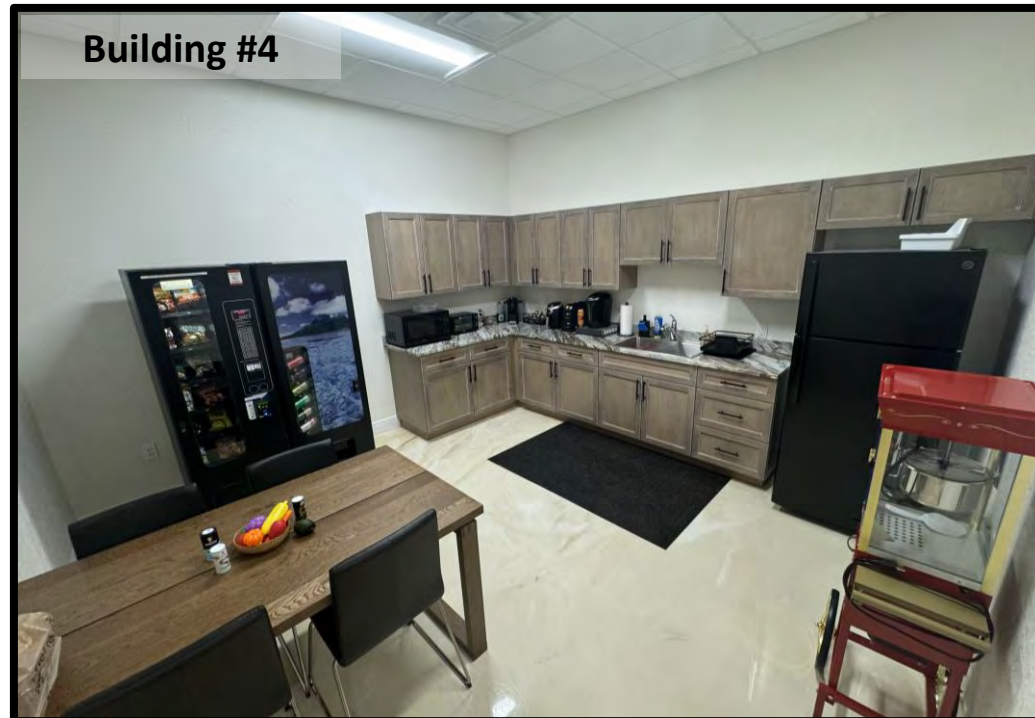
Building #1



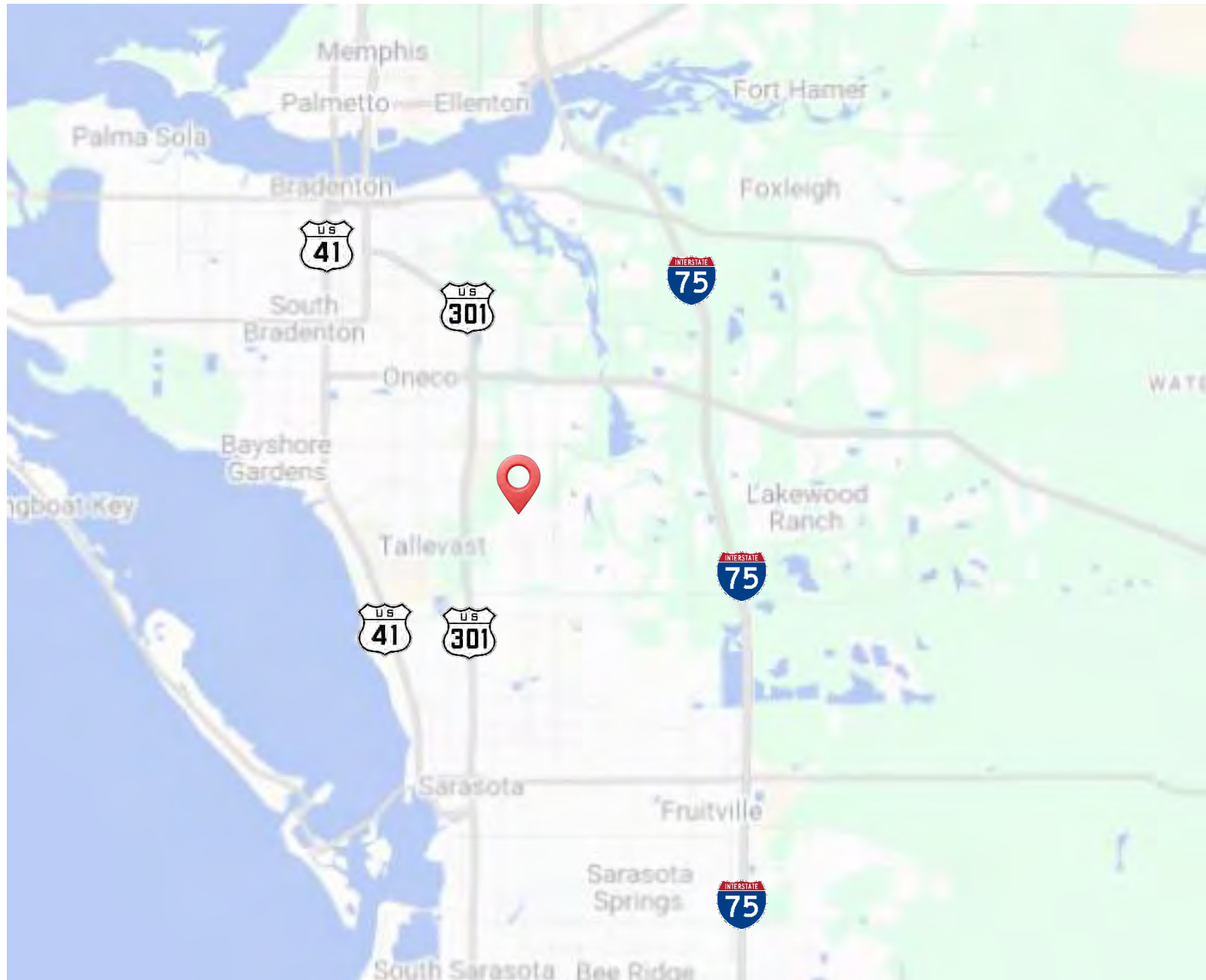
Building #2



Building #4



Exceptional Access via US HWY 301, US 41, and I-75





LOBER
REAL ESTATE

Contact for pricing and more info:

Devin Beeler
Senior Associate
+1 727 709 2179

Devin@Loberrealestate.com

Jason McCormick
Senior Associate
+1 561 613 5293

Jason@Loberrealestate.com

Robbie Lober
Managing Member
+1 727 999 1806

Robbie@Loberrealestate.com

The information contained in this document has been obtained from sources believed reliable. While Lober Real Estate LLC does not doubt its accuracy, Lober Real Estate LLC has not verified it and makes no guarantee, warranty, or representation about it. It is your responsibility to independently confirm its accuracy and completeness. Any projections, opinions, assumptions, or estimates used are for example only and do not represent the current or future performance of the property. The value of this transaction to you depends on tax and other factors which should be evaluated by your tax, financial, and legal advisors. You and your advisors should conduct a careful, independent investigation of the property to determine to your satisfaction the suitability of the property for your needs.