



Jimmy Martin, SIOR
Senior Vice President
+1 804 267 7218
jimmy.martin@colliers.com

11144 Progress Road, Ashland, VA

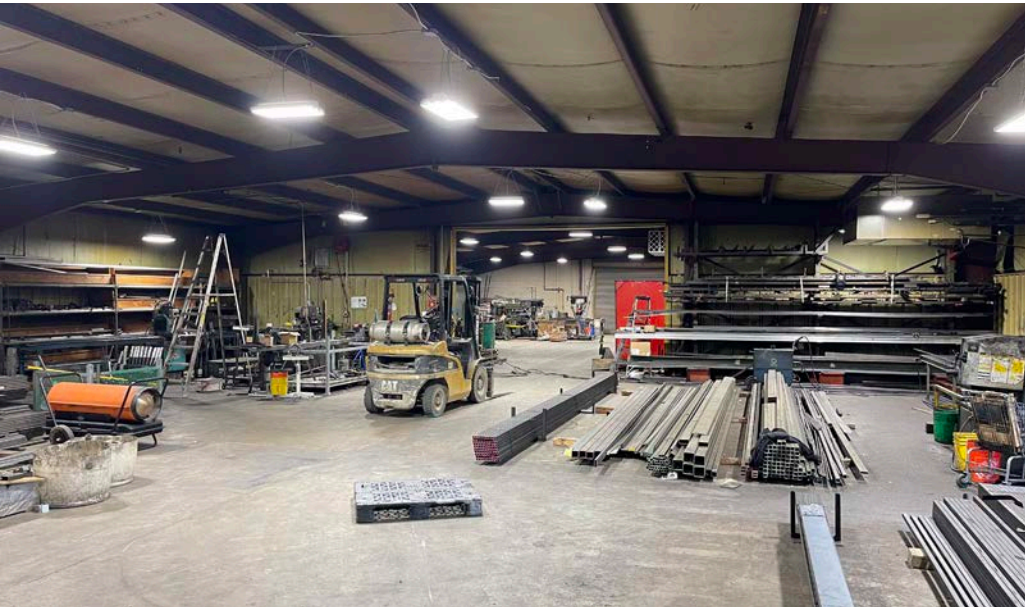
Rare opportunity – 9,700 SF industrial building with outdoor storage in the Hanover Air Park

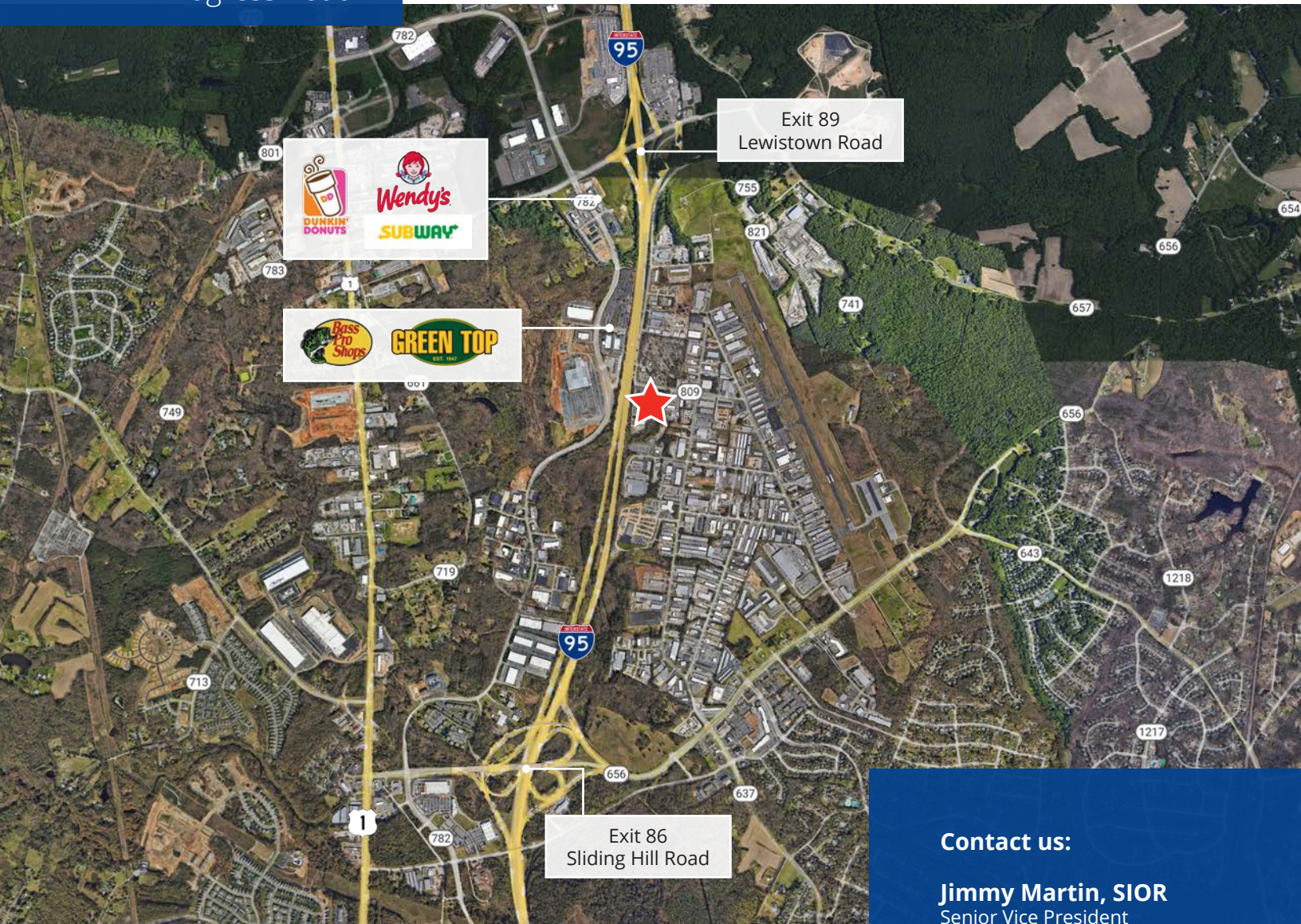
9,700 SF warehouse building on 2.6 acres

- 14' clear at center
- M-3 zoning
- 2, 12'x18' grade doors, 1 dock door
- +/- 1,200 SF of office
 - 3 offices, 1 warehouse manager office
 - Open reception in front
 - 2 bathrooms in office, 1 warehouse bathroom with multiple stalls
 - Warehouse breakroom with fridge and sink
- 36'x36' pole barn, 24' clear at the center
- 1.5 miles to I-95 exits

2221 Edward Holland Dr
Suite 600 | Richmond, VA
P: +1 804 320 5500
colliers.com/richmond

11144 Progress Road





Contact us:

Jimmy Martin, SIOR
Senior Vice President
+1 804 267 7218
jimmy.martin@colliers.com

Colliers
2221 Edward Holland Dr
Suite 600 | Richmond, VA
P: +1 804 320 5500