

*Conceptual rendering for illustrative purposes only; final conditions, improvements, and configurations may vary



1501 Taylors Lane Cinnaminson, NJ 08077

IOS Site: ±3.05 Acres - 4,052 SF Building

Available for Lease


NORTHMARQ ADVISORS

 ACTION COMMERCIAL
GROUP

Property Features



Property Information

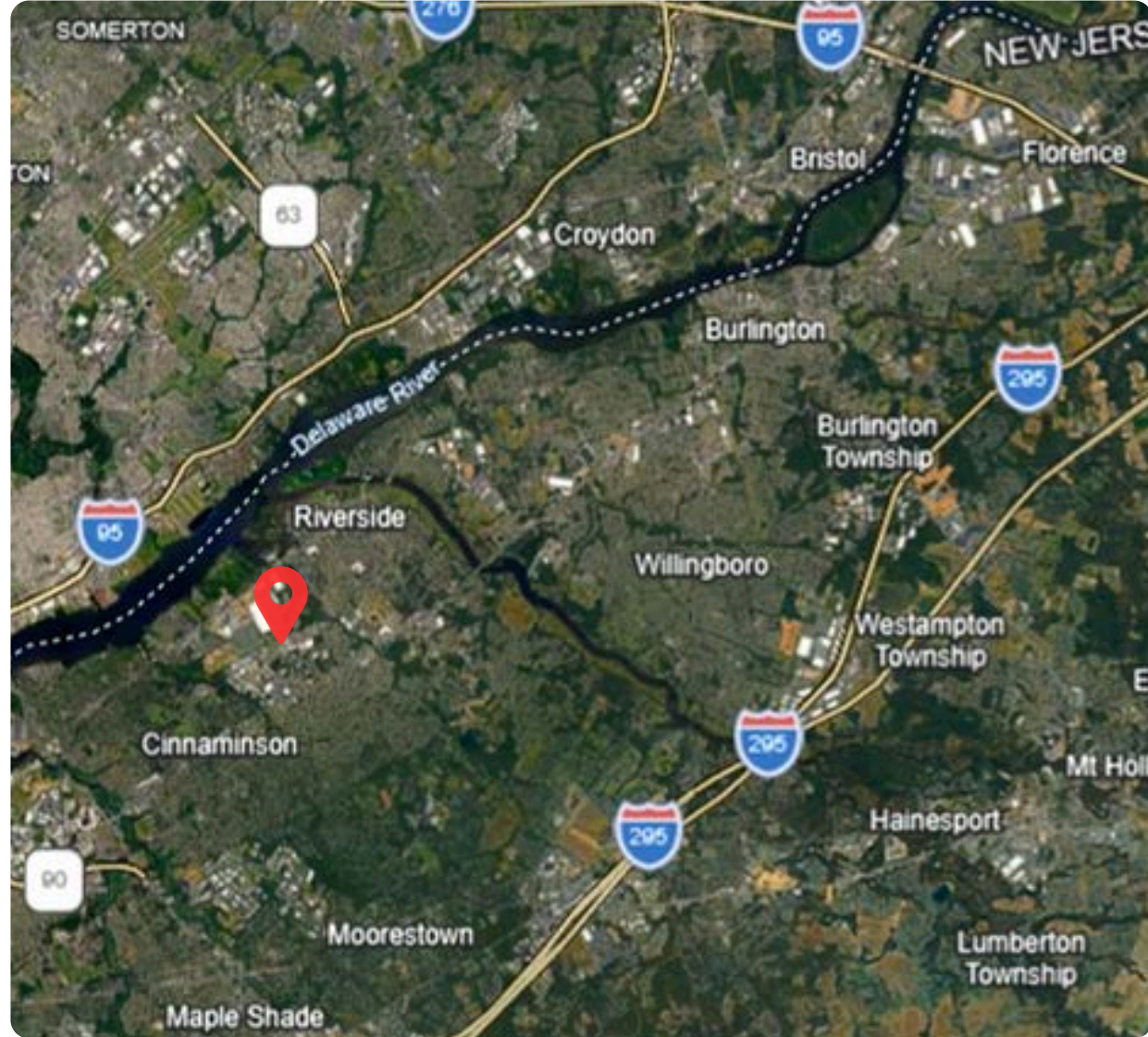
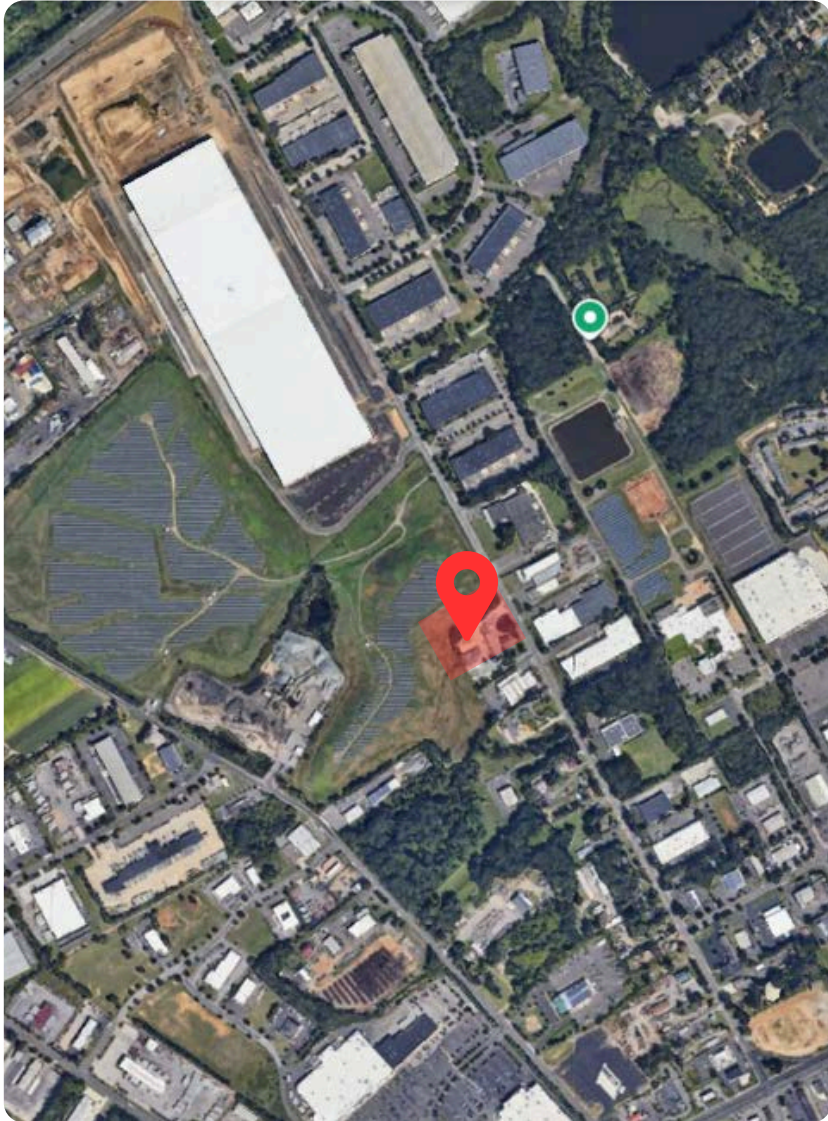
- ± 3.05 Acre
- Building: 4,052 SF
- Concrete Apron
- Graveled lot
- (4) 14' Drive In Doors - 1 Pull Thru
- **On-site Office**
- **Private Ingress & Egress**



Uses/Zoning:

Zoning: Industrial (IND)
Truck Repair
Fleet Service
Equipment Rental
Truck Parking
Building Materials
Other Industrial Uses

Property Location



3.5 Miles to NJ 73



5.2 Miles to I-95



6.0 Miles to I-295



4.0 Miles to Tacony-Palmyra Bridge



11.9 Miles to Port of South Jersey



77 Miles to Port of Newark



Adam Deeves
adam@actioncre.com
(267) 621-0705

Chris Dewey
chris@actioncre.com
(610) 322-5779

Tim Whitworth
timwhitworth@northmarqadv.com
(215) 606-8912

Exclusively Represented by:
Northmarq Advisors

2540 Metropolitan Drive Unit B
Trevose, PA 19053

Disclaimer:

The information contained herein is from sources deemed reliable, but no warranty or representation is made as to the accuracy thereof and no liability may be imposed.