

FOR LEASE | **±22,310 SF ON ±3.93 ACRES**

**1875 ROBERT J CONLAN BOULEVARD**

PALM BAY, FL 32905

**LEE & ASSOCIATES**  
COMMERCIAL REAL ESTATE SERVICES

**AlterralOS**  
INDUSTRIAL OUTDOOR STORAGE



**ROBERT J CONLAN BLVD | 12,000 AADT**

**DIRECT VISIBILITY ON ROBERT J CONLAN BLVD**

### **BUILDING**

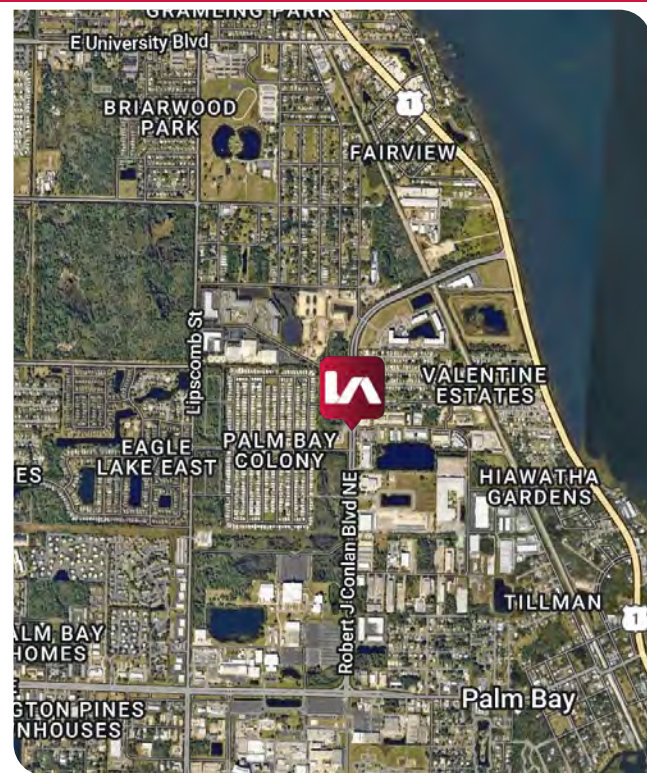
- 22,310 SF Free Standing Warehouse Building with Six (6) Grade Level Doors providing Drive-through functionality

### **OUTDOOR STORAGE**

- Paved lay-down yard and stabilized outdoor storage
- Fenced & Secured

### **LOCATION**

- Situated in the northeastern sector of Palm Bay, Florida (Brevard County), in a well-established commercial and industrial area of the city. The property lies directly on Robert J Conlan Blvd NE, a key east-west connector that links the nearby Palm Bay Road corridor with U.S. 1 (East New Haven Avenue) to the east and provides convenient routing toward Interstate 95, the primary north-south freeway on Florida's East Coast. Robert J Conlan Boulevard intersects with Palm Bay Road just to the west, offering direct access to local retail, services and employment centers, and feeds into the broader regional network that connects to US 1 and I-95 within a short drive.



### Leasing Contact:

Ryan Griffith  
Senior Vice President/Principal  
rgriffith@lee-associates.com  
D 908.208.4774

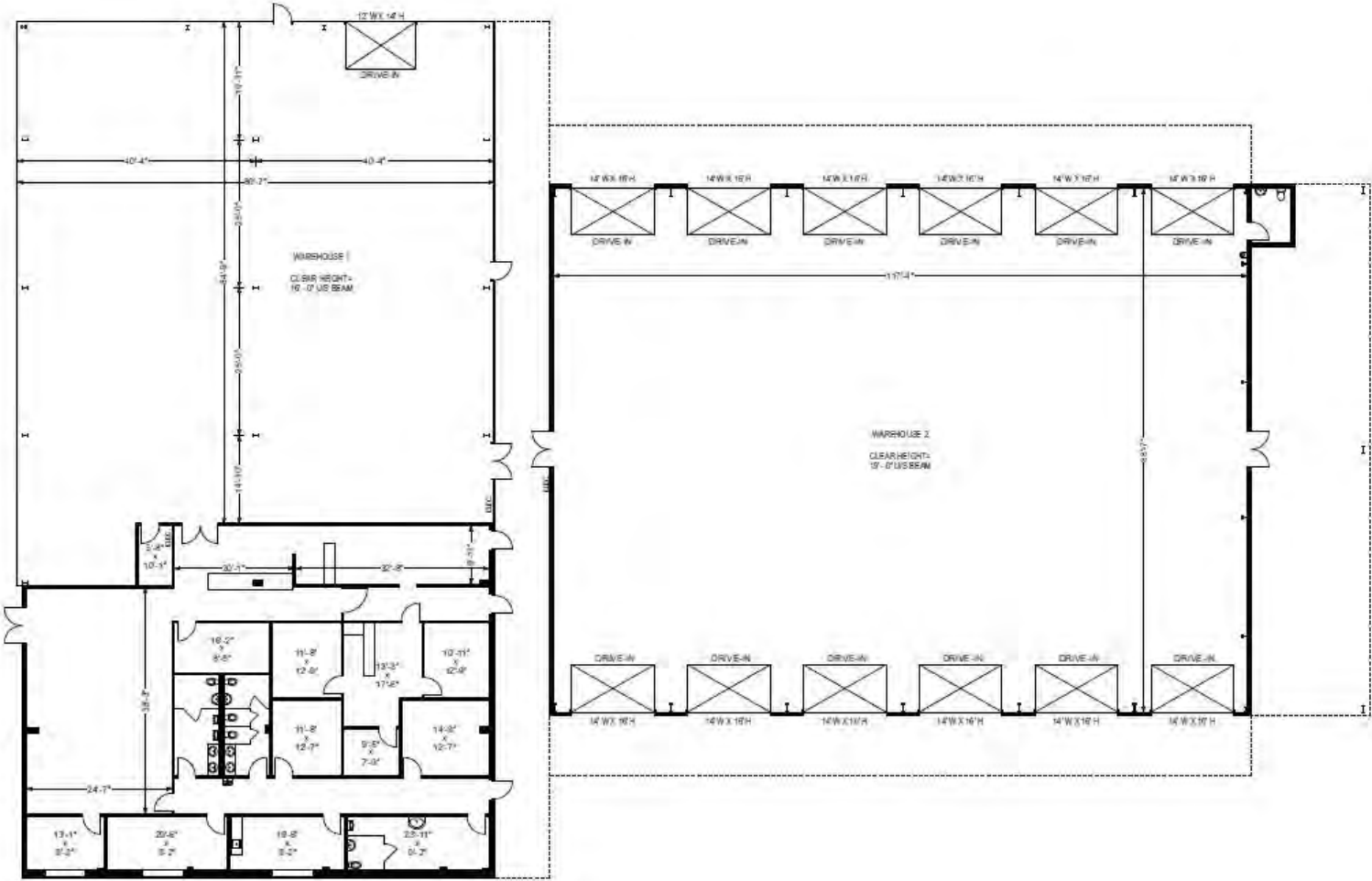
Christopher "CJ" Griffith, SIOR  
Vice President  
cgriffith@lee-associates.com  
D 908.380.3627

Charles W. Duvall  
Senior Associate  
cduvall@lee-associates.com  
D 321.243.0857

1875 ROBERT J CONLAN BLVD  
PALM BAY, FL 32905



1875 ROBERT J CONLAN BLVD  
PALM BAY, FL 32905



All information furnished regarding property for sale, rental or financing is from sources deemed reliable, but no warranty or representation is made to the accuracy thereof and same is submitted to errors, omissions, change of price, rental or other conditions prior to sale, lease or financing or withdrawal without notice. No liability of any kind is to be imposed on the broker herein.



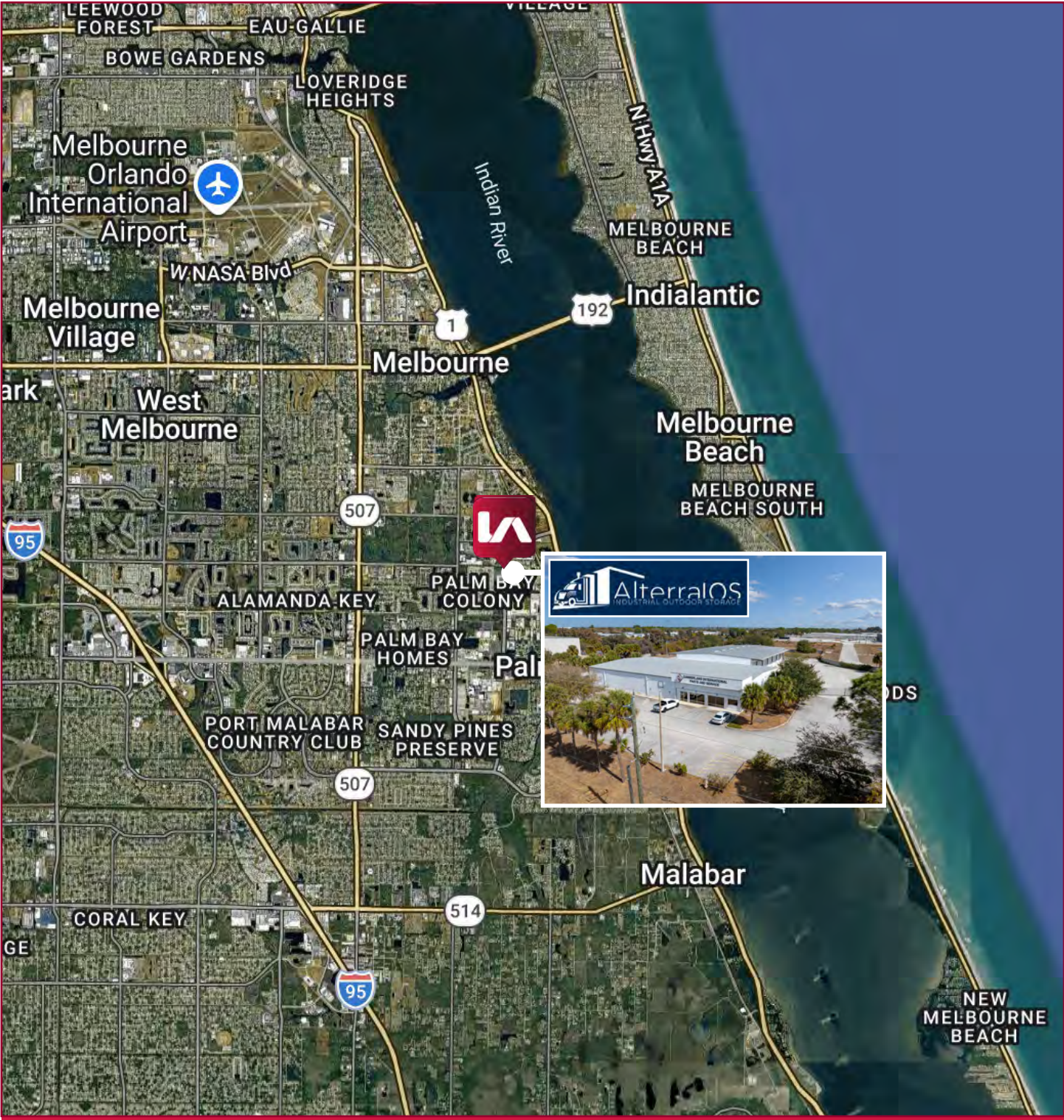
1875 ROBERT J CONLAN BLVD  
PALM BAY, FL 32905



All information furnished regarding property for sale, rental or financing is from sources deemed reliable, but no warranty or representation is made to the accuracy thereof and same is submitted to errors, omissions, change of price, rental or other conditions prior to sale, lease or financing or withdrawal without notice. No liability of any kind is to be imposed on the broker herein.



1875 ROBERT J CONLAN BLVD  
PALM BAY, FL 32905



All information furnished regarding property for sale, rental or financing is from sources deemed reliable, but no warranty or representation is made to the accuracy thereof and same is submitted to errors, omissions, change of price, rental or other conditions prior to sale, lease or financing or withdrawal without notice. No liability of any kind is to be imposed on the broker herein.

